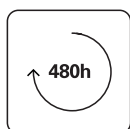
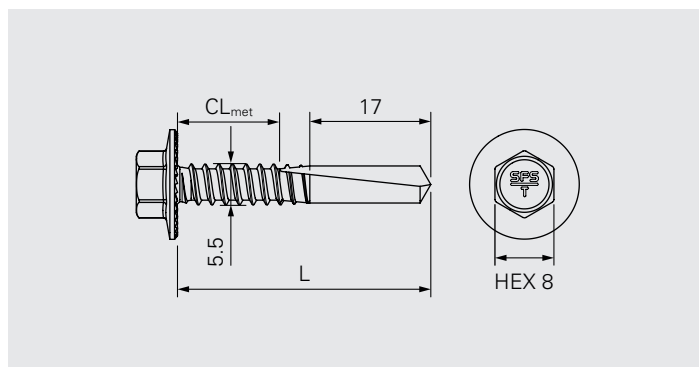


# SD14-H15-5.5



## Application

Fastening of metal decks, liner trays onto metal beams

Component 1 (t <sub>I</sub> )		Component 2 (t <sub>II</sub> )		$\Sigma_{\max} t_I + t_{II}$
Steel	0.50–1.50	Steel	4.0–12.0	13.50

## Fastener material

Carbon steel, Durocoat® 480

## Approvals



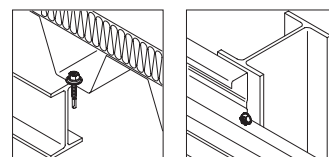
## Features and Benefits

- Self drilling fastener suitable for installation of metal decks and liner trays
- Reduced risks of over driving and unwinding achieved by locking ribs
- High shear resistance achieved by optimized fastener geometry
- High corrosion durability thanks to special galvanic zinc coating

## Documentation

Approval document (ETA) | Declaration of performance (DoP)

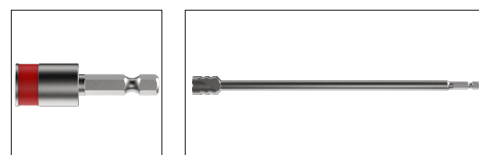
All measures in mm



## Fastener in carbon steel onto steel

Product code	PU	L	CL <sub>met</sub>	t <sub>fix, met</sub>	
SD14-H15-5,5×34	500	34	0–23	0–11/19	1420173

t<sub>fix, met</sub>: CL<sub>met, min.</sub> – (CL<sub>met, max.</sub> – t<sub>II, max.</sub> or load-bearing clamping length according ETA)/(CL<sub>met, max.</sub> – t<sub>II, min.</sub>)



## Accessories/Ancillaries

Product code	PU	Drive	Head drive	
E308-¼"-50	1	¼"	HEX8	1646160
Drive shaft H15 head	5	¼"	H15	1517546

### All measures in mm

All information is non-binding and without guarantee. Before using the products, all specifications and calculations must be checked by a suitably qualified person and local regulations must be observed. This document is subject to revision. We reserve the right to make technical changes.